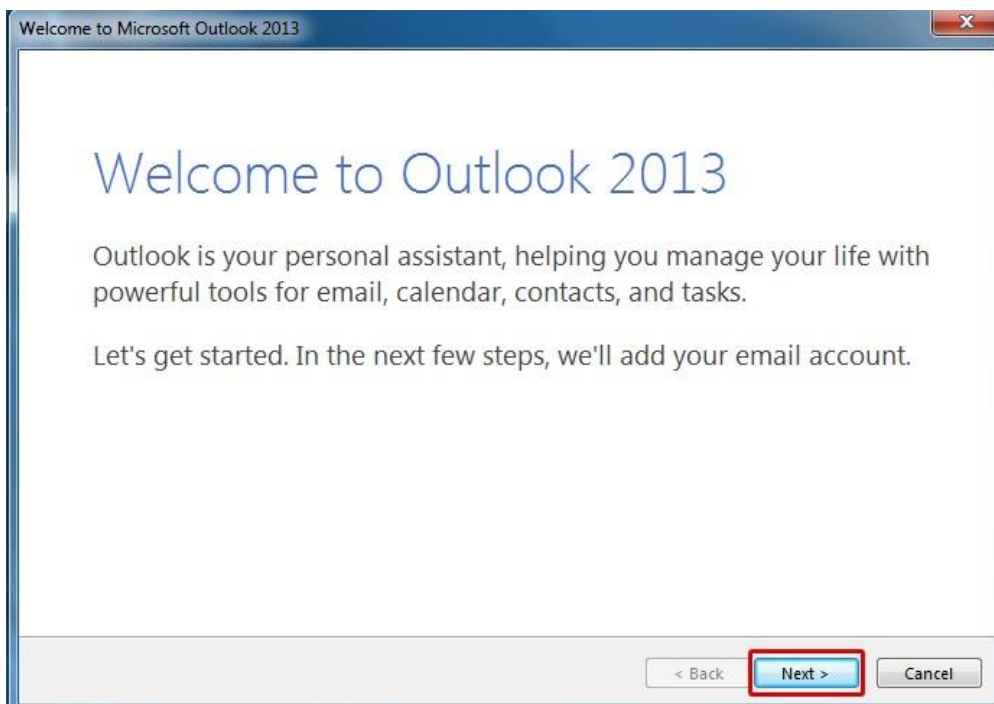
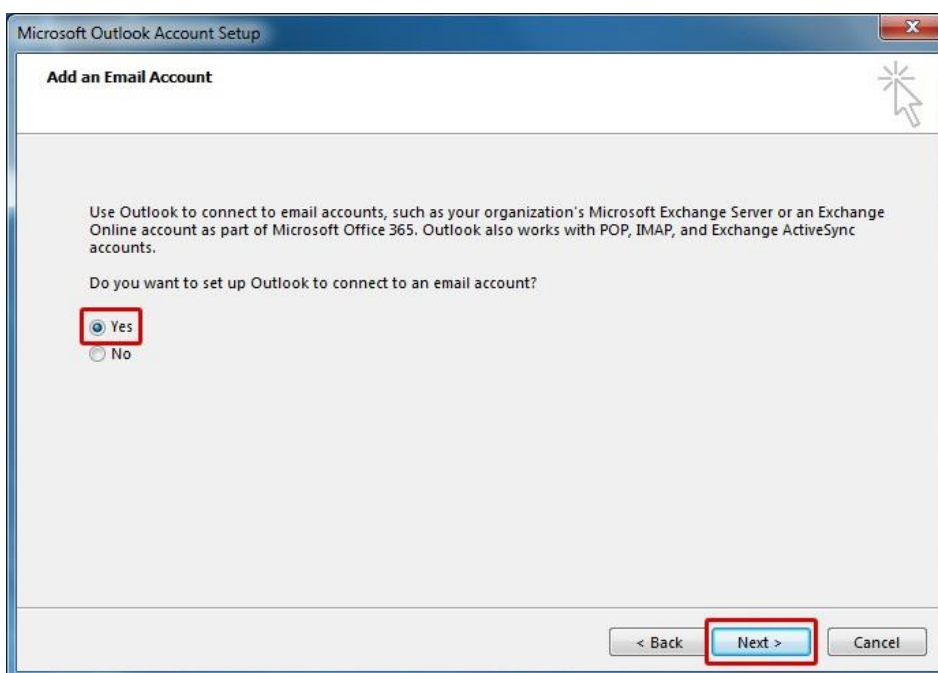


CONFIGURAÇÕES DO OUTLOOK 2013

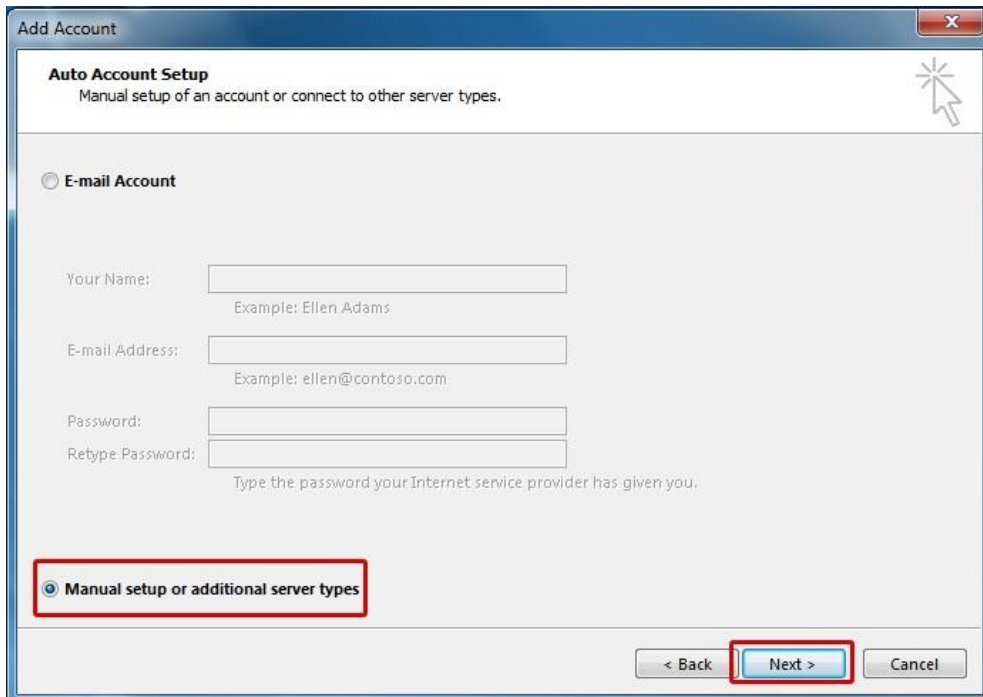
Abra seu Outlook 2013 e clique em *Next* (próximo)



Em seguida clique em *Yes*, e novamente em *Next*.



Marque a opção *Manual setup or additional server types*, clique em *Next*



Add Account

Auto Account Setup
Manual setup of an account or connect to other server types.

E-mail Account

Your Name:
Example: Ellen Adams

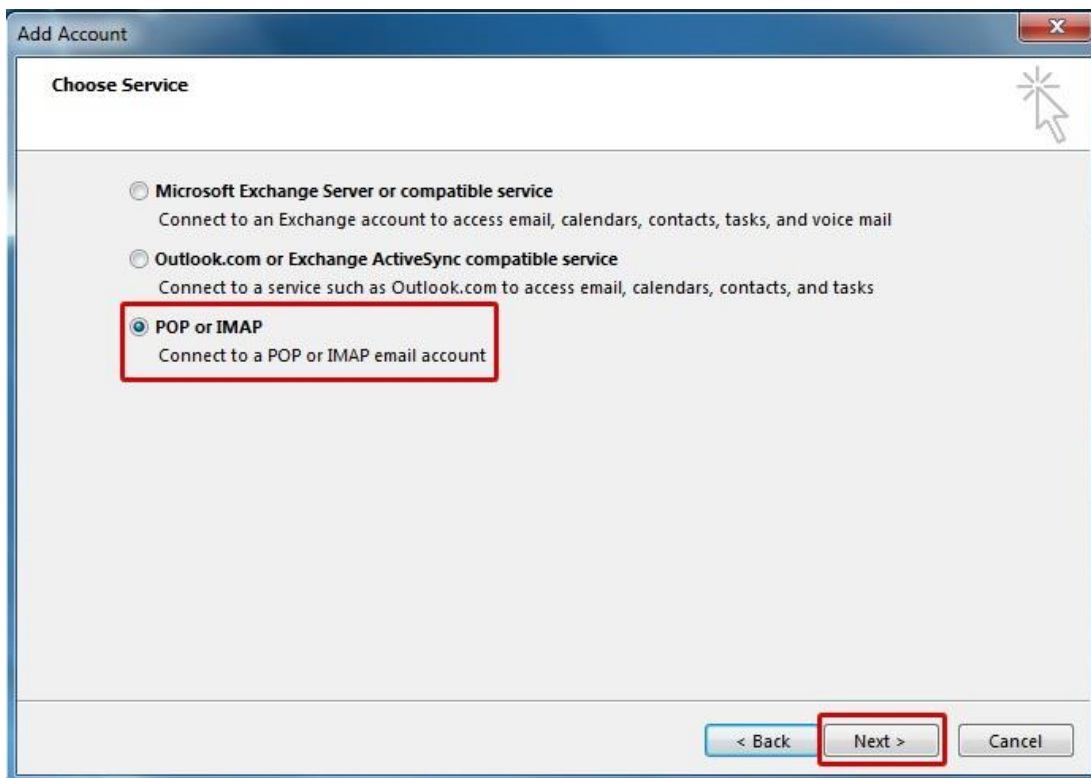
E-mail Address:
Example: ellen@contoso.com

Password:
Retype Password:
Type the password your Internet service provider has given you.

Manual setup or additional server types

< Back **Next >** Cancel

Selecione a opção **POP or IMAP**, depois **Next**



Add Account

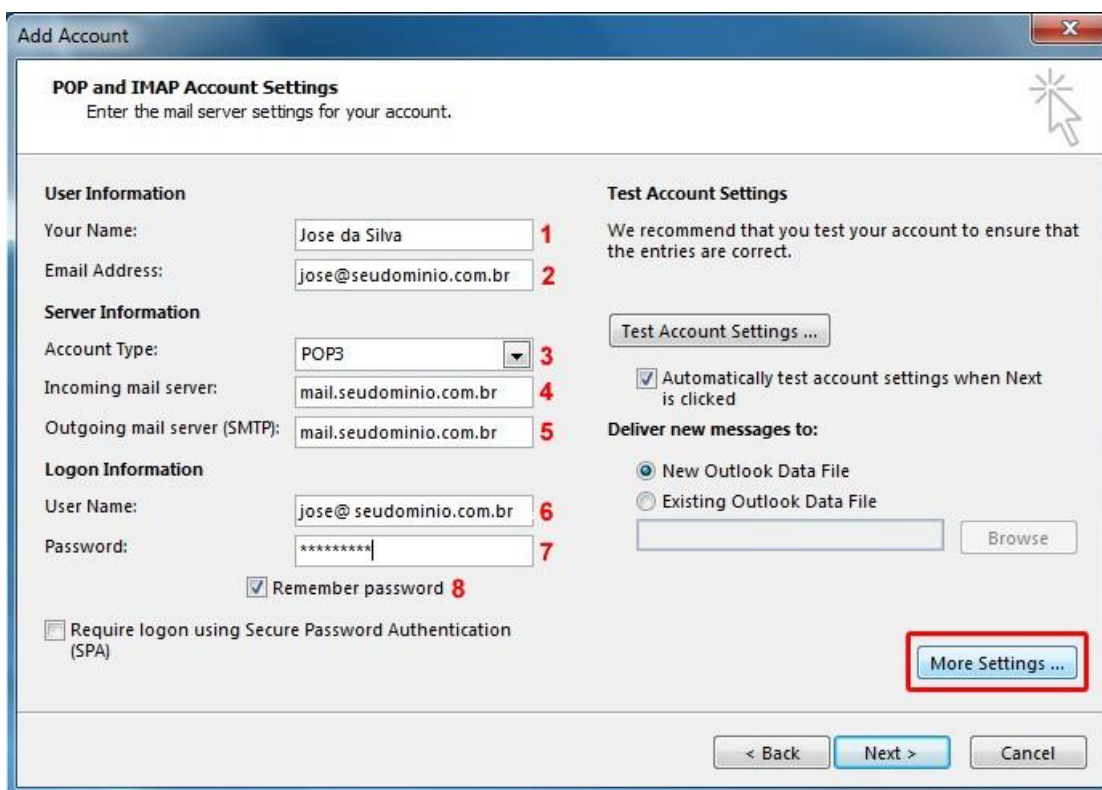
Choose Service

Microsoft Exchange Server or compatible service
Connect to an Exchange account to access email, calendars, contacts, tasks, and voice mail

Outlook.com or Exchange ActiveSync compatible service
Connect to a service such as Outlook.com to access email, calendars, contacts, and tasks

POP or IMAP
Connect to a POP or IMAP email account

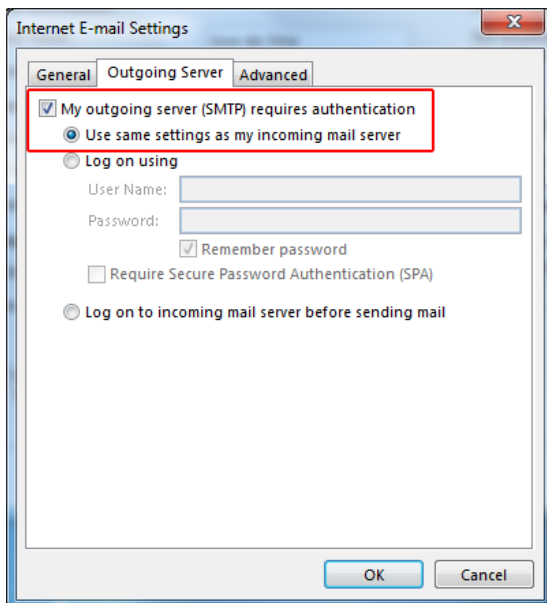
< Back **Next >** Cancel



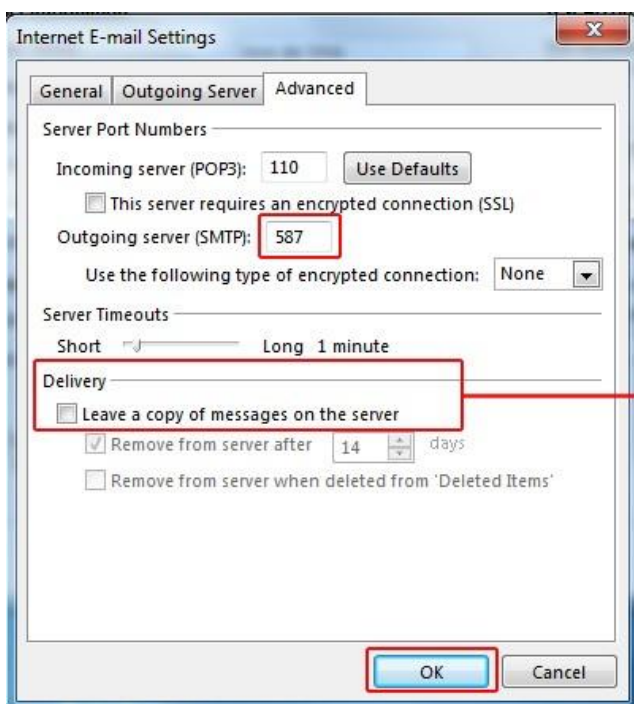
1. **Your name:** nome de sua conta
2. **Emails address:** seu endereço de e-mail completo
3. **Account type:** POP3
4. **Incoming mail server:** mail.seudominio.com.br
5. **Outgoing mail server (SMTP):**
mail.seudominio.com.br
6. **User name:** seu endereço de e-mail completo
7. **Password:** digite sua senha
8. **Remember password:** selecione essa opção para lembrar sua senha

Clique em **More Settings...** para continuar a configuração.

Clique na guia **Outgoing Server** e habilite a opção **My outgoing server (SMTP) requires authentication** e **Use same settings as my incoming mail server**.



clique na guia **Advanced**, modifique a **Outgoing server (SMTP)** para **587** e desmarque a opção **Leave a copy of messages in the Server**, clique em **OK** (como exemplo abaixo).



Desmarque esta opção